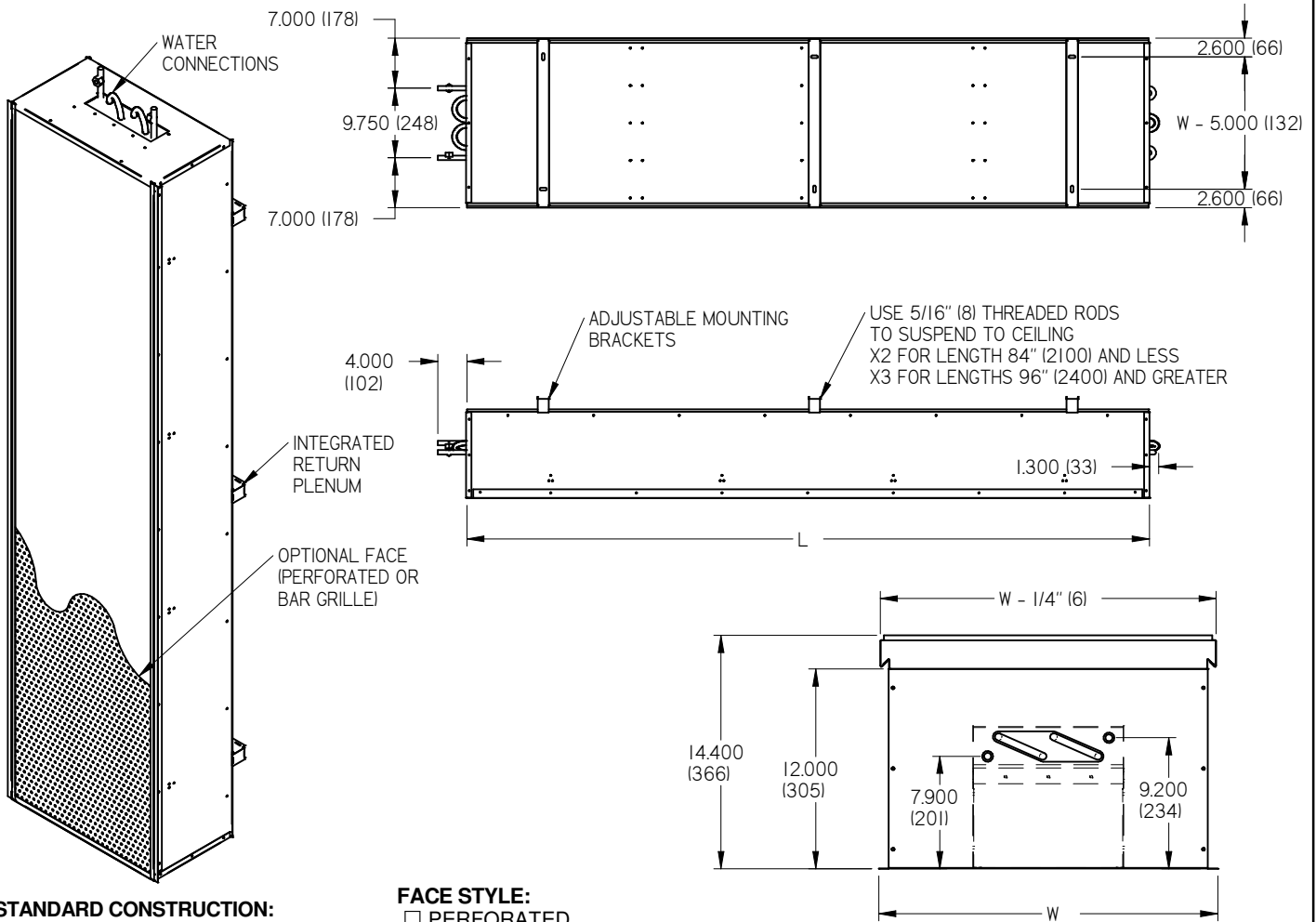


PCBL-R : PASSIVE CHILLED BEAM LINEAR W/ INTEGRATED RETURN



STANDARD CONSTRUCTION:

- ALL METAL ASSEMBLY
- EXTRUDED ALUMINUM FINS
- ALUMINUM PERFORATED FACE
- COPPER WATER PIPING

FINISH:

- B17 BLACK PAINT
- B12 WHITE PAINT
- OTHER

NOTES:

- FACTORY TOLERANCE +/- 1/32" (1)

PROTECTIVE FILM:

- PF - PROTECTIVE FILM ON FACE AND COIL

FACE STYLE:

- PERFORATED ALUMINUM
- BAR GRILLE (EXTRUDED ALUMINUM)
- NONE (SHOWN)

END CONDITION OPTIONS:

- 1/2" SWEAT
- 1/2" NPT (FEMALE)

* ANY COMBINATION OF THE ABOVE WIDTH AND LENGTH CAN BE SELECTED

** SEE SUBMITTAL 248924 FOR AVAILABLE HOSE AND VALVE PACKAGES

	IMPERIAL		METRIC		WEIGHT (lbs)	
	NOMINAL SIZE	ACTUAL SIZE (W)	NOMINAL SIZE	ACTUAL SIZE (W)		
WIDTH	24	23.750 (603)	600	23.386 (594)		
	NOMINAL SIZE	ACTUAL SIZE (L)	NOMINAL SIZE	ACTUAL SIZE (L)	DRY	WET
LENGTH	24	23.750 (603)	600	23.386 (594)	21	24
LENGTH	36	35.750 (908)	900	35.197 (894)	31	36
LENGTH	48	47.750 (1213)	1200	47.008 (1194)	41	48
LENGTH	60	59.750 (1518)	1500	58.819 (1494)	51	60
LENGTH	72	71.750 (1822)	1800	70.630 (1794)	61	72
LENGTH	84	83.750 (2127)	2100	82.441 (2094)	71	84
LENGTH	96	95.180 (2418)	2400	94.252 (2394)	81	95
LENGTH	108	107.750 (2737)	2700	106.063 (2694)	91	107
LENGTH	120	119.750 (3042)	3000	117.874 (2994)	101	119

* WEIGHTS ARE WITH PERFORATED FACE

ALL METRIC DIMENSIONS () ARE SOFT CONVERTED. IMPERIAL DIMENSIONS ARE CONVERTED TO METRIC AND ROUNDED TO THE NEAREST MILLIMETER.

PROJECT:		<p style="font-size: 2em; font-weight: bold; margin: 0;">DS</p> <p style="font-weight: bold; margin: 0;">259760</p> <p style="margin: 0;">2012/09/04</p>	<p style="font-weight: bold; margin: 0;">PCBL-R</p> <p style="margin: 0;">PASSIVE CHILLED BEAM LINEAR W/ INTEGRATED RETURN</p>
ENGINEER:			
CUSTOMER:			
SUBMITTAL DATE:	SPEC. SYMBOL:		